

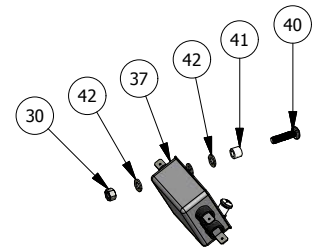
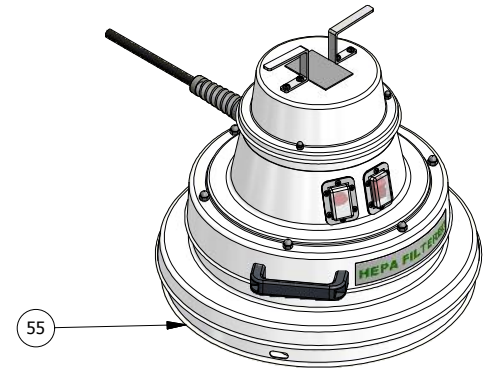
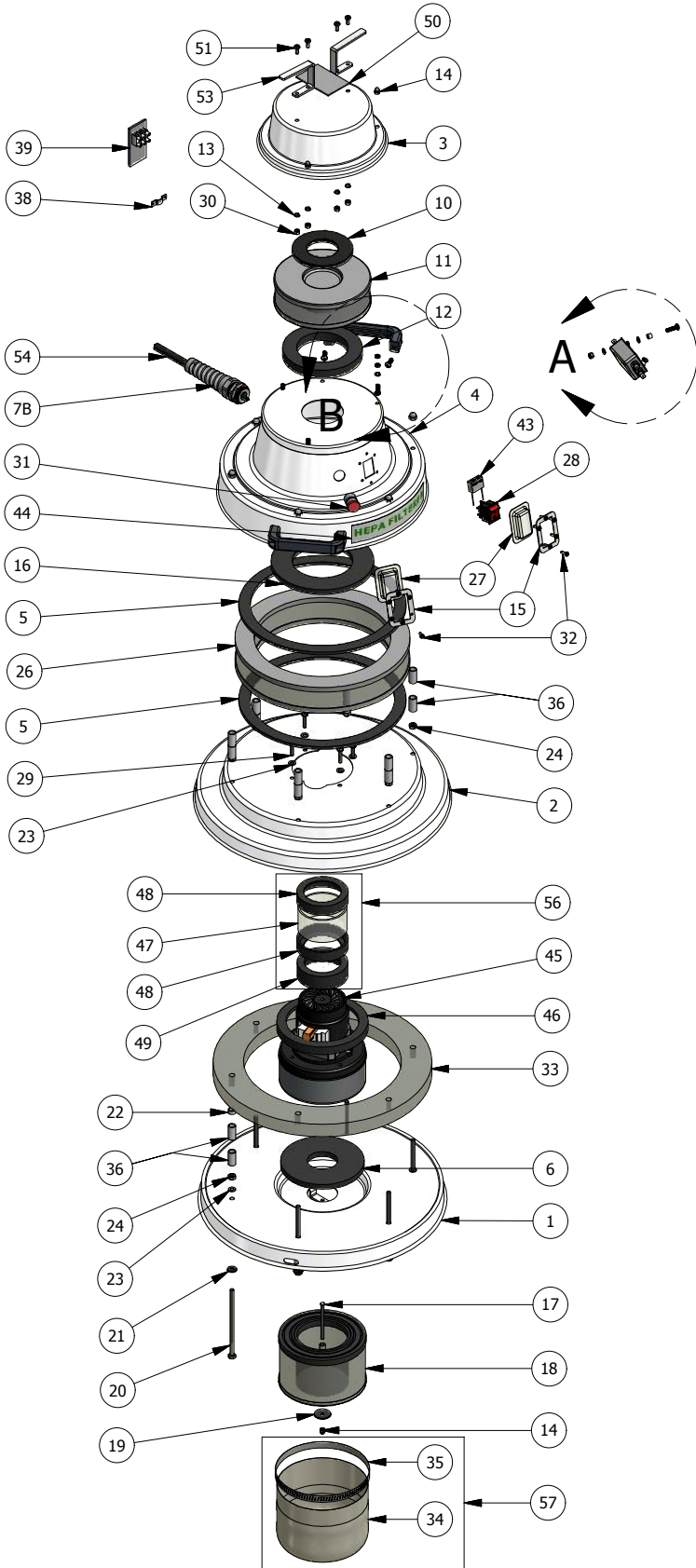


PLANET 22 S ATEX

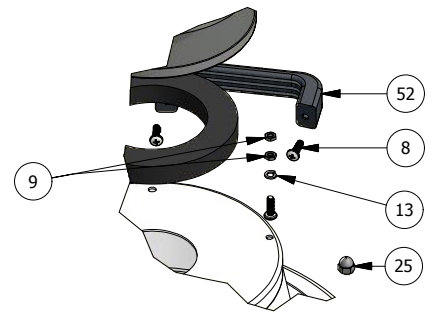




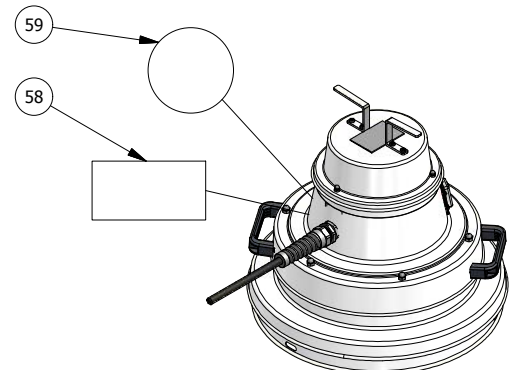
PLANET 22 S ATEX



DETAIL A



DETAIL B



DETAIL



IPC Soteco




II 1/3 D Ex tc IIIB T200°C Dc IP6X c T3

PLANET 22 S ATEX

PARTS LIST

ITEM	TIGER-VAC PART NUMBER	SOTECO PART NUMBER	DESCRIPTION	QTY
1	215375-01B		SPECIAL LID FOR BL-SD-IP6X, POWDER COATED	1
2	215376B		LOWER MOTOR HOUSING FOR ATEX-XXE, CRS, POWDER COATED	1
3	215378B		HEPA HOUSING FOR BL-SD-IP6X, CRS, POWDER COATED	1
4	215377-01B		SPECIAL UPPER MOTOR HOUSING FOR BL-SD-IP6X, POWDER COATED	1
5	SUP022		1/4" x 3/4" CELLULAR URETHANE STRIP GASKET WITH ADHESIVE BACKING /FT	2
6	213212		GASKET LOWER MOTOR BLACK OPEN CELL RUBBER W/ ADHESIVE BACKING 3/8" TH. X 5-1/2" O.D X 2" I.D	1
7A	211791A		STRAIN RELIEF PIGTAIL CORD CONNECTOR W/LOCKING NUT, LIQUID TIGHT, GREY NYLON (PG 11), DIA. .231-.394	1
7B	211791B		STRAIN RELIEF PIGTAIL CORD FITTING+LOCK NUT,GRAY NYLON (PG 11), LIQUID TIGHT, DIA. .118-.275	1
8	211050		BOLT, PAN PHILLIPS, M5 x 16, S/S	7
9	211473		HEX JAM NUT, M5, SS	6
10	211281N		GASKET, WHITE NITRILE, 1/4" X 4.25" OD X 2-5/8" ID, MOTOR COOLING AIR	1
11	211854S	030197	HEPA FILTER, 2" HIGH, 99.99% EFFICIENCY ON 0.3 MICRON, WITH GASKET (PRIVATE LABEL - SOTECO)	1
12	211027G		GASKET FOR HEPA/ULPA FILTER, 3/4" NEOPRENE SPONGE SC41, 5-1/4 OD X 3-3/8 ID	1
13	211093		SPRING WASHER, M5, SS	7
14	211131		ACORN HEX NUT, M5 SS	4
15	211698		FRAME FOR SWITCH BOOT,S/S	2
16	218680		GASKET, CELLULAR URETHANE, 0.375" THICK, 4" ID X 6.75" OD PSA 1 SIDE	1
17	217512		HEX BOLT M5 x 70	1
18	212304BS	030198	HEPA FILTER FOR MODEL C-10 EX, 99.99% EFFICIENCY ON 0.3 MICRON (PRIVATE LABEL - SOTECO)	1
19	214554		BONDED SEALING WASHER, SCREW SIZE; #10, 1-1/8" OD, GALVANISED STEEL	1
20	217901		HEX BOLT, 1/4"-20 X 5.250" LG, STAINLESS STEEL	6
21	211130		SEAL WASHER, 1/4" (BARTITE 1/4)	6
22	211830B		PLASTIC SPACER 1/2"OD x 3/8"ID x 1/4"LG	6
23	211074		FLAT WASHER, M6, SS	10
24	211172		HEX NUT, 1/4"-20 S/S	12
25	213842		ACORN NUT 1/4"-20 S/S	6
26	215372S	030199	HEPA FILTER w/GASKETS, 99.99% EFF ON 0.3 MICRON, 11.522"OD x9.066"ID x 2" HIGH (PRIVATE LABEL-SOTECO)	1
27	211573		SEAL EXTERNAL (SWITCH BOOT)	2
28	211352		SWITCH, 2POLE, 1THROW	1
29	211129		BOLT, M5 x 25, S/S	4
30	211092		HEX NUT, M5, SS	6
31	216910B	06963	FILTER BLOCKAGE MONITORING DEVICE FOR 230V MODELS	1
32	211699A		BOLT 6-32 x 1/2" VIS A MACHINE-TETE ROND PHILIPS S/S	12
33	215390		FOAM SILENCER, FOR MOTOR WORKING AIR EXHAUST, FOR MODEL AREX 22E	1
34	212244		SD* MICRO SAFETY FILTER (EPITROPIC POLYESTER) FITS HEPA FILTER #212304B (CLAMP NOT INCLUDED)	1
35	214313		TRIDON CLAMP STAINLESS STEEL #096; 114/165MM	1
36	211830		PLASTIC SPACER 1/2"OD x 3/8"ID x 1"LG	24
37	211217B		EMI FILTER ONLY, DELTA ELECTRONIC 10DKAG5	1
38	SUP116		CABLE HOLDER (SANGLES POUR CABLE) FOR 3/16" DIA CABLE	1
39	211767		ELECTRICAL KIT NO.4	1
40	211158		BOLT, PAN PHILLIPS, M5 X 20, S/S	2
41	211759		SPACER BUSHING FOR #10 SCREW	2
42	211085		FLAT WASHER, M5, SS	4
43	211090N		CAPACITOR RIFA	1
44	212630		STICKER "HEPA FILTERED" GREEN ON REFLECTIVE	1


IPC Soteco

 CE  II 1/3 D Ex tc IIIB T200°C Dc IP6X c T3

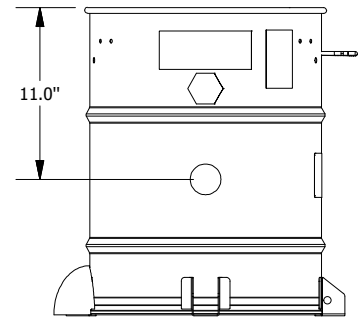
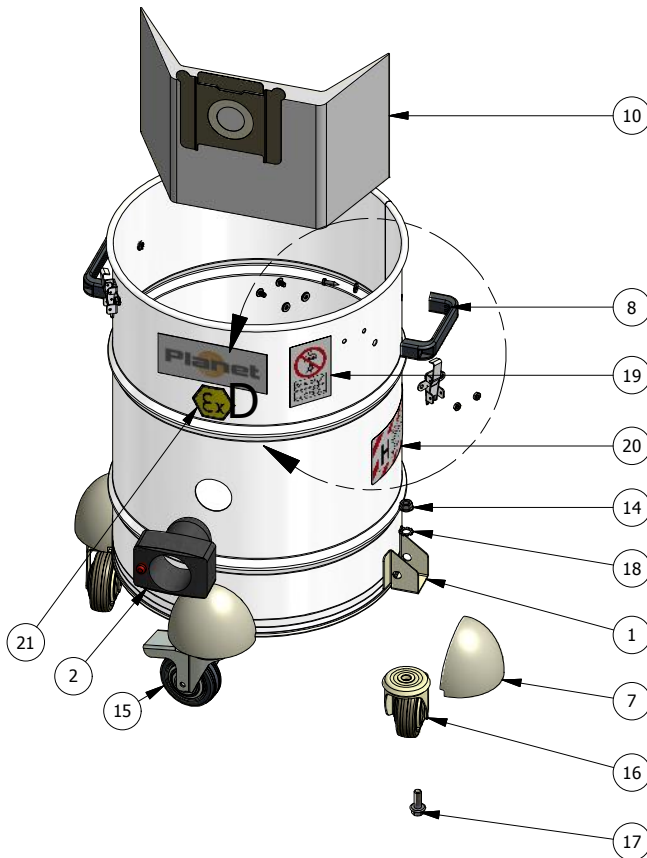
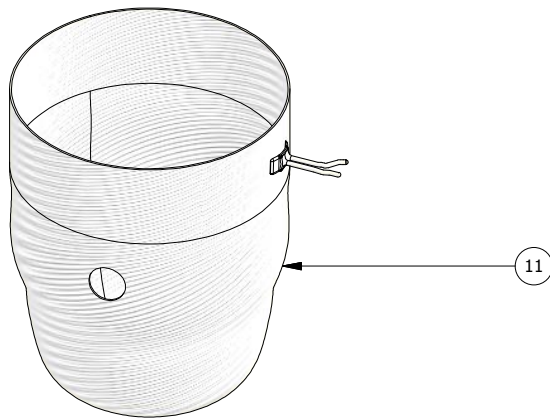
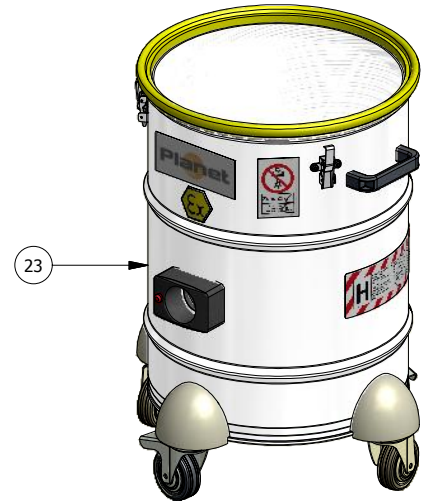
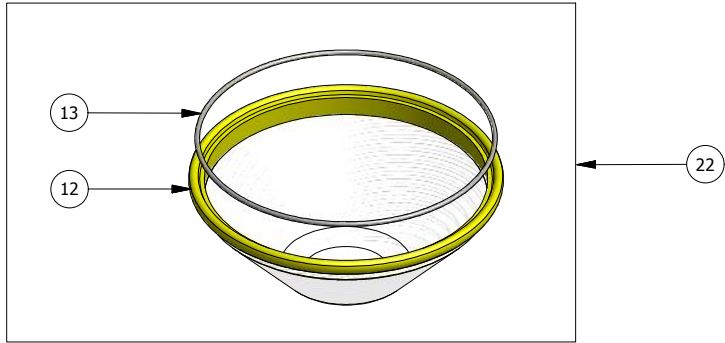
PLANET 22 S ATEX

PARTS LIST

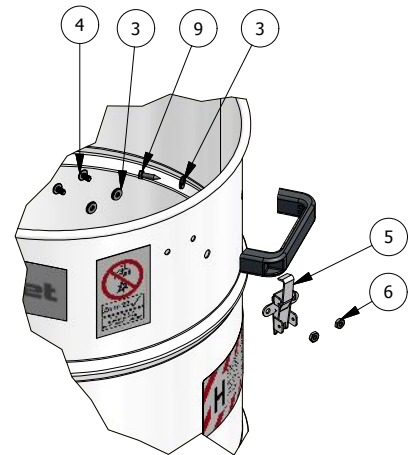
ITEM	TIGER-VAC PART NUMBER	SOTECO PART NUMBER	DESCRIPTION	QTY
45	213285	061300100	MOTOR BYPASS (A210) 220-240V 50/60Hz	1
46	212325		LOWER MOTOR GASKET FOR AS-5 / UPPER MOTOR GASKET FOR CWR-8/10/15 240V	1
47	215384M		GUIDE TUBE 3.25" OD X 3" ID X 1.75" LENGHT, FOR COOLING AIR INTAKE, FOR MODEL ATEX 22E	1
48	213516		U-CHANNEL GASKET /FT	2
49	213618		GASKET, 5/16" (8 MM) THICK, HARD RUBBER, FOR COOLING AIR INTAKE, FOR MOTOR F (240V BY-PASS)	1
50	NAMEPLATE			1
51	211084		BOLT, PAN PHILLIPS, M5 X 12, S/S	4
52	211203T		PLASTIC HANDLE FOR RECOVERY TANK, BLACK	2
53	211492A		HANDLE FOR POWER CORD, STAINLESS STEEL, FOR CWR-xx, ELECTROPOLISHED	2
54	212857		EUROPEAN POWER CABLE, BLACK OIL RESISTANT (NOT ARMoured) 3 x 1.5mm, FOR EXP1- / METER	10M
55	215382B		POWERHEAD ASSEMBLY FOR MODEL C-10EX ATEX CATEGORY 3, 230-240V 50/60Hz, SINGLE PHASE	1
56	215384		GUIDE TUBE ASSEMBLY WITH GASKETS, FOR COOLING AIR INTAKE, FOR MODEL ATEX 22E	1
57	212244A		SD* MICRO SAFETY FILTER (EPITROPIC POLYESTER) ASSEMBLY WITH CLAMP, FITS HEPA FILTER #212304B	1
58	211660		WARNING STICKER "USE INDOORS ONLY" REFLECTIVE MATERIAL	1
59	211271		STICKER "MADE IN CANADA"	1



PLANET 22 S ATEX




DETAIL



DETAIL C



IPC Soteco

CE  II 1/3 D Ex tc IIIB T200°C Dc IP6X c T3

PLANET 22 S ATEX

PARTS LIST

ITEM	TIGER-VAC PART NUMBER	SOTECO PART NUMBER	DESCRIPTION	QTY
1	211551AWB		DRUM, WITH WHEEL BRACKETS WELDED, STAINLESS STEEL AISI 430, FOR BLSL-40L	1
2	219530	R2782 NE/GV COND	SUCTION INLET ASSEMBLY, 60mm, STATIC CONDUCTIVE PLASTIC (CONSISTS OF 3 PIECES)	1
3	211545		SEAL WASHER, #10 (BARTITE)	10
4	214375		TRUSS HEAD PHILLIPS MACHINE SCREW, 10-32 THREAD, 3/8" LENGTH, 18-8 SS	6
5	211515		LATCH, STAINLESS STEEL (TIGER-VAC)	3
6	213792		HEX NUT, 10-32, S/S	6
7	214603	06801	WHEEL COVER, GREY PLASTIC	4
8	211203T		PLASTIC HANDLE FOR RECOVERY TANK, BLACK	2
9	211763A		SHEET METAL SCREW, PAN HEAD PHILLIP, #10 x 3/4, ZINC PLATED	4
10	212994A-SD		COLLECTION BAG MADE OF CONDUCTIVE MATERIAL	1
11	212100SH		CONDUCTIVE POLY LINER FOR MODEL C-10 EX, WITH DRAW STRING AND HOLE FOR 60mm SUCTION INLET	2
12	215392-SD		MAIN FILTER ONLY SD* EPITROPIC POLYESTER WITH STAINLESS STEEL BANDS	1
13	211146		RING FOR FILTER, 15", GALVANIZED	1
14	216508		HEX NYLON-INSERT LOCKNUT, M12, ZINC PLATED	4
15	214995		WHEEL 80mm CONDUCTIVE, BLACK w/YELLOW TAG, WITH BOLT M12 x 30, WITH BRAKE	2
16	214994		WHEEL 80mm CONDUCTIVE, BLACK w/YELLOW TAG, WITH BOLT M12 x 30	2
17	216509		HEX BOLT, M12 X 30, ZINC PLATED	4
18	212932B		LOCKWASHER INTERNAL TOOTH 7/16" INT. S/S	4
19	214842		STICKER ZONE 22	1
20	214844		STICKER WARNING "H", ATEX DIRECTIVE	1
21	212627		EX STICKER, ATEX DIRECTIVE, DIE CUT HEXAGON, YELLOW AND BLACK, 50mm x 50mm	1
22	215393-SD		MAIN FILTER ASSEMBLY, EPITROPIC POLYESTER WITH STAINLESS STEEL BANDS	1
23	211551-03		RECOVERY TANK #211551AWB (40L. SAE 430) 4W ASSEMBLY, DRY ONLY, INCLUDES FILTERS & WHEELS	1